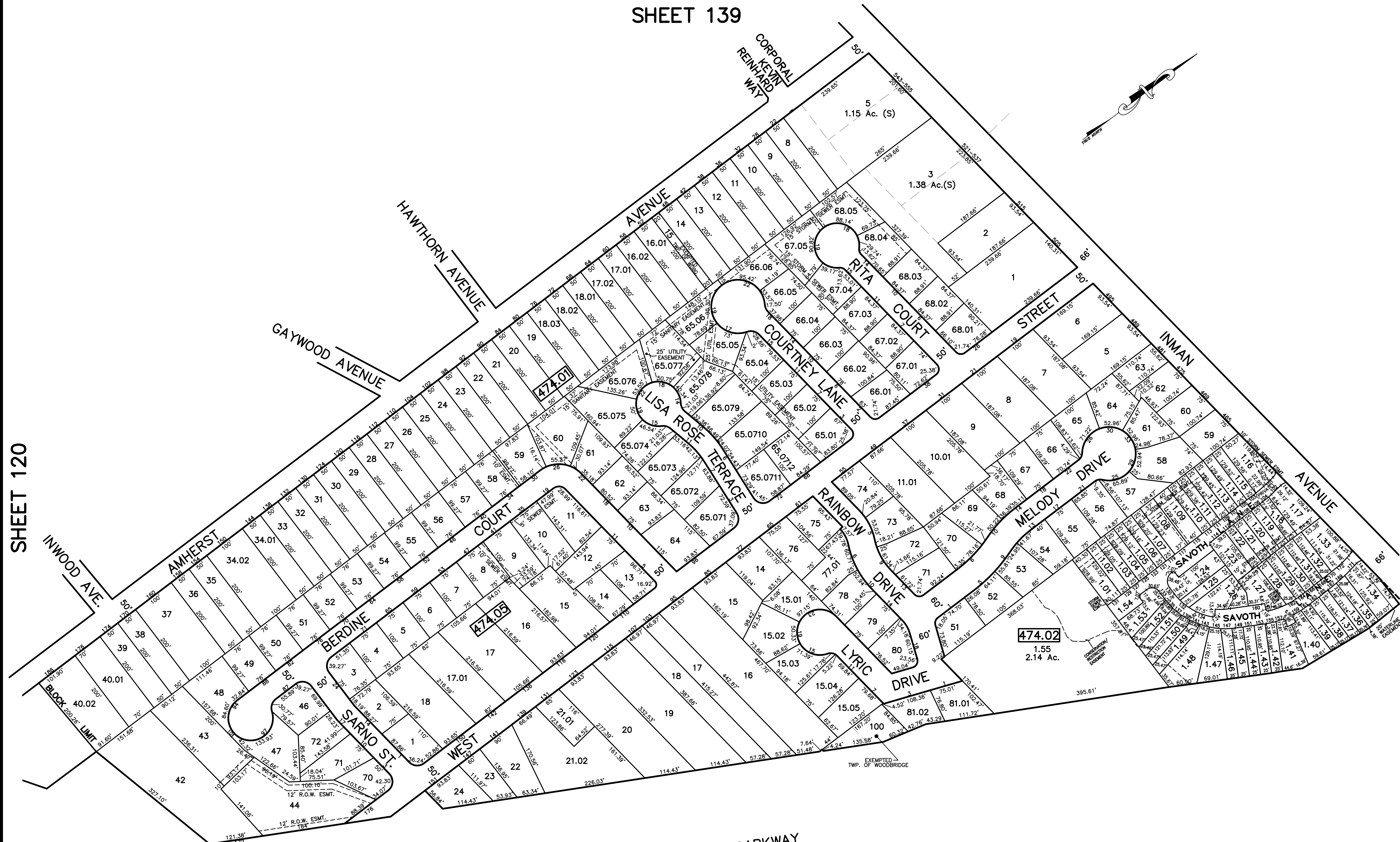
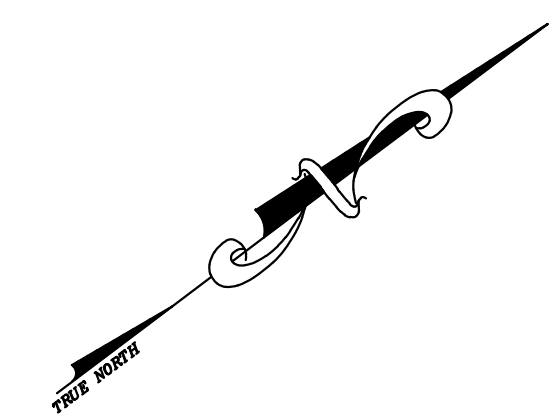


SHEET 139

DATE	DESCRIPTION	REV. BY	CHK.
12/31/17	Tax Map Revisions	SR	
12/31/16	Tax Map Revisions	SR	
12/31/15	Tax Map Revisions	SR	
12/31/12	Tax Map Revisions	SR	
	REVISED		



SHEET 120

SHEET 146

SHEET 147

NOTE
 PORTIONS OF THIS TAX MAP MAY HAVE BEEN PREPARED FROM
 SCANNED OR DIGITIZED FILED MAPS AND/OR TAX MAPS.
 ALL PORTIONS OF THIS TAX MAP HAVE BEEN PREPARED
 ELECTRONICALLY IN AUTOCAD MAP 2000.

SHEET 122

SHEET 141

TAX MAP
 WOODBRIDGE TOWNSHIP
 MIDDLESEX COUNTY, NEW JERSEY
 SCALE : 1"= 100' DATE : JUNE 2008
 MICHAEL J. McGURL, P.L.S.
 CME ASSOCIATES
 3141 BORDENTOWN AVENUE, PARLIN
 NEW JERSEY, 08859