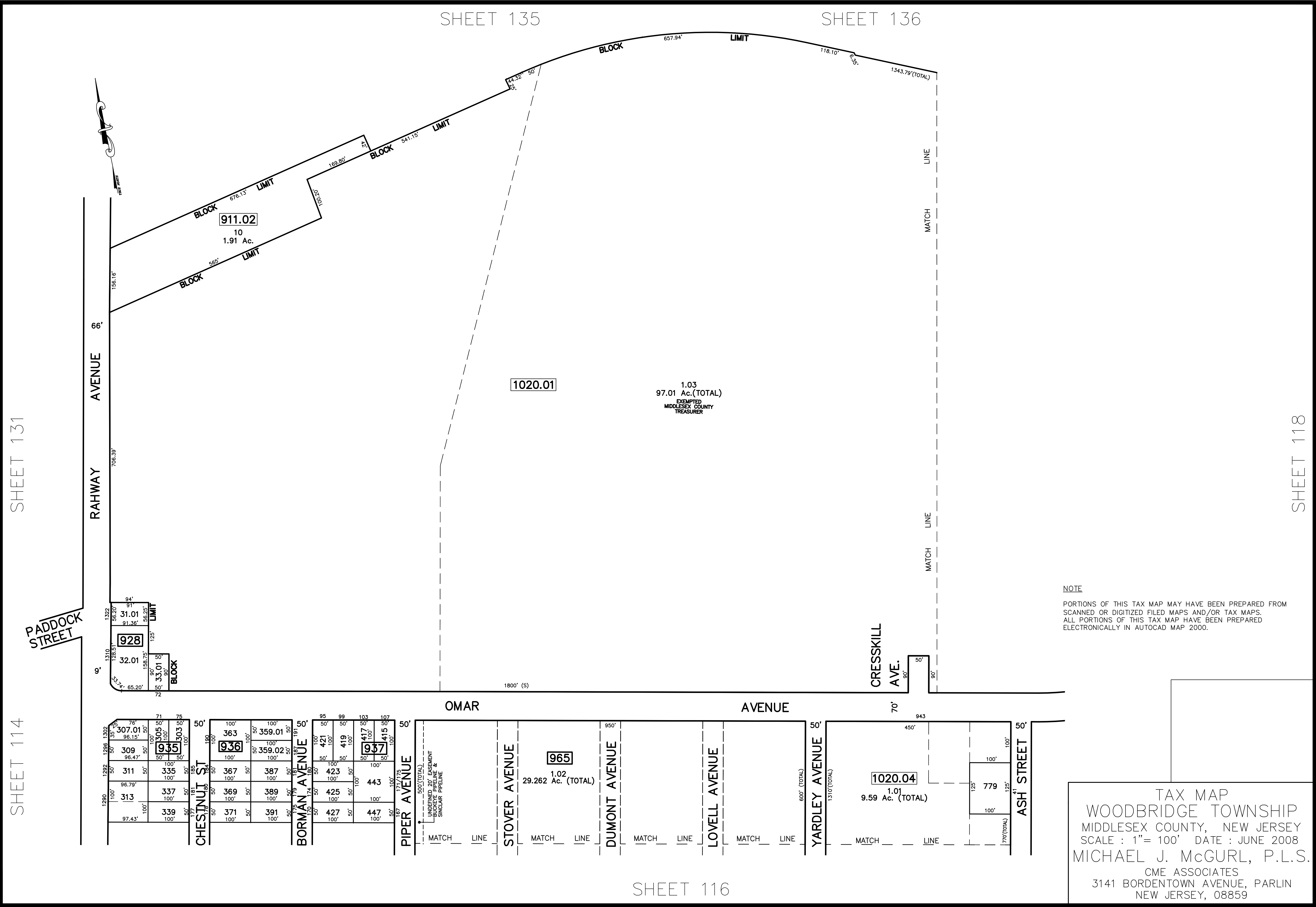


12/31/18	REVISED	R.O.W. Takings-Bk. 228, lots 31 and 32	JSE	REV. BY	CHK.
12/31/16	SB	Tax Map Revisions	SB		
12/31/14	SB	Tax Map Revisions	SB		
12/31/12	SB	Tax Map Revisions	SB		
10/04/10	REVISED	Tax Map Revisions	SB		
		DESCRIPTION			



**NOTE**  
 PORTIONS OF THIS TAX MAP MAY HAVE BEEN PREPARED FROM  
 SCANNED OR DIGITIZED FILED MAPS AND/OR TAX MAPS.  
 ALL PORTIONS OF THIS TAX MAP HAVE BEEN PREPARED  
 ELECTRONICALLY IN AUTOCAD MAP 2000.

**TAX MAP**  
 WOODBRIDGE TOWNSHIP  
 MIDDLESEX COUNTY, NEW JERSEY  
 SCALE : 1" = 100' DATE : JUNE 2008  
 MICHAEL J. McGURL, P.L.S.  
 CME ASSOCIATES  
 3141 BORDENTOWN AVENUE, PARLIN  
 NEW JERSEY, 08859

SHEET 135

SHEET 136

SHEET 131

SHEET 118

SHEET 114

SHEET 116