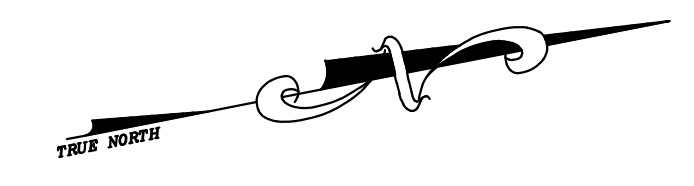
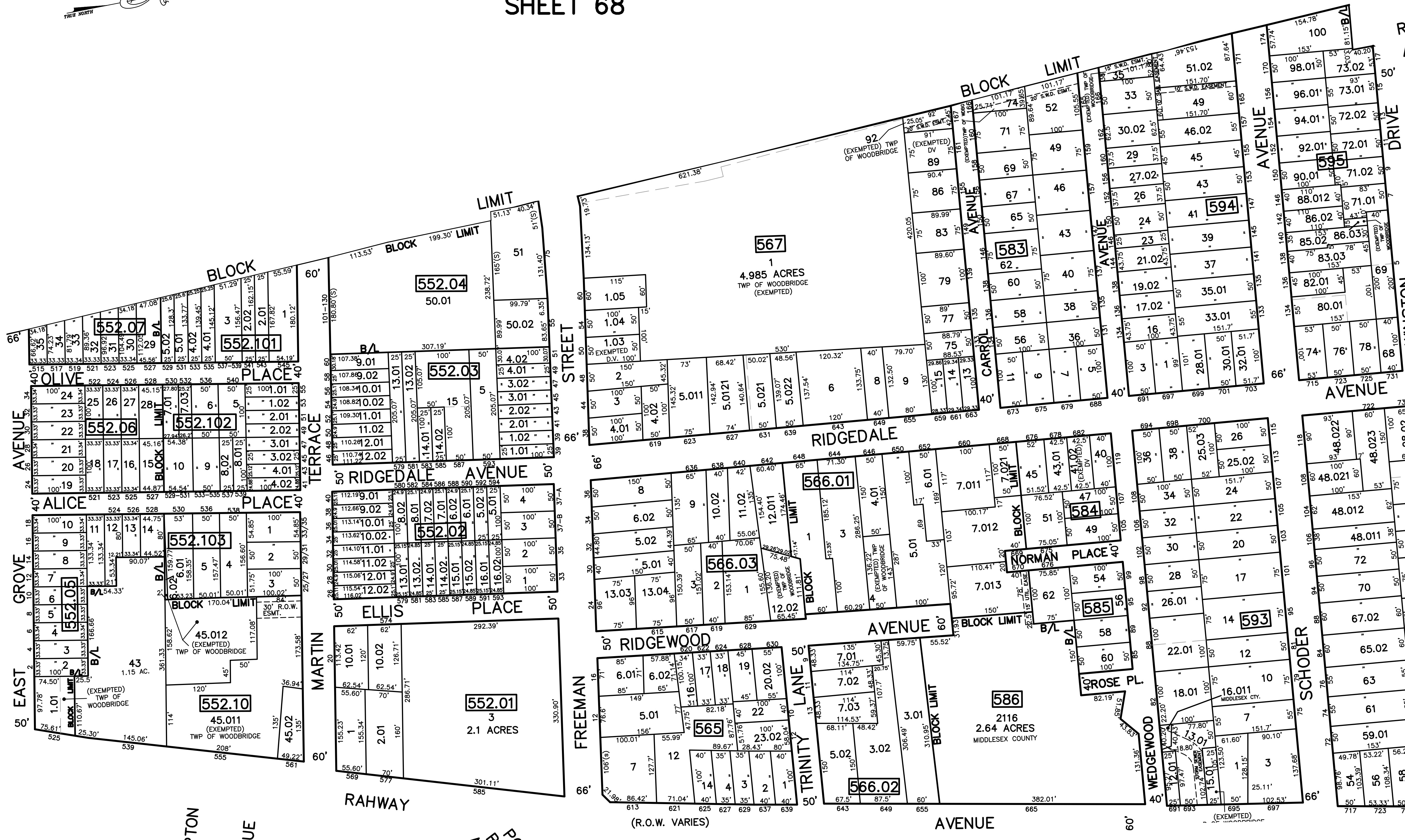


SHEET 68



| | | |
|----------|-------------------------------------|---------|
| 12/31/17 | Tax Map Revisions | SR |
| 12/31/13 | Tax Map Revisions | SR |
| 12/31/12 | Tax Map Revisions | SR |
| 09/29/10 | Subdivision-Bk 566.01, lots 1 and 3 | JSE |
| REVISED | DESCRIPTION | REV. BY |
| | | CHK. |

SHEET 56



RUTHERFORD AVENUE

JENESEE COURT

WINSTON DRIVE

AVENUE

CRASKE AVENUE

HILLSIDE PLACE

SCHODER STREET

SHEET 81

SHEET 57

SHEET 70

SHEET 82

NOTE
 PORTIONS OF THIS TAX MAP MAY HAVE BEEN PREPARED FROM
 SCANNED OR DIGITIZED FILED MAPS AND/OR TAX MAPS.
 ALL PORTIONS OF THIS TAX MAP HAVE BEEN PREPARED
 ELECTRONICALLY IN AUTOCAD MAP 2000.

TAX MAP
 WOODBRIDGE TOWNSHIP
 MIDDLESEX COUNTY, NEW JERSEY
 SCALE : 1"= 100' DATE : JUNE 2008
 MICHAEL J. McGURL, P.L.S.
 CME ASSOCIATES
 3141 BORDENTOWN AVENUE, PARLIN
 NEW JERSEY, 08859