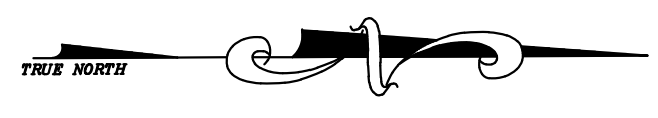
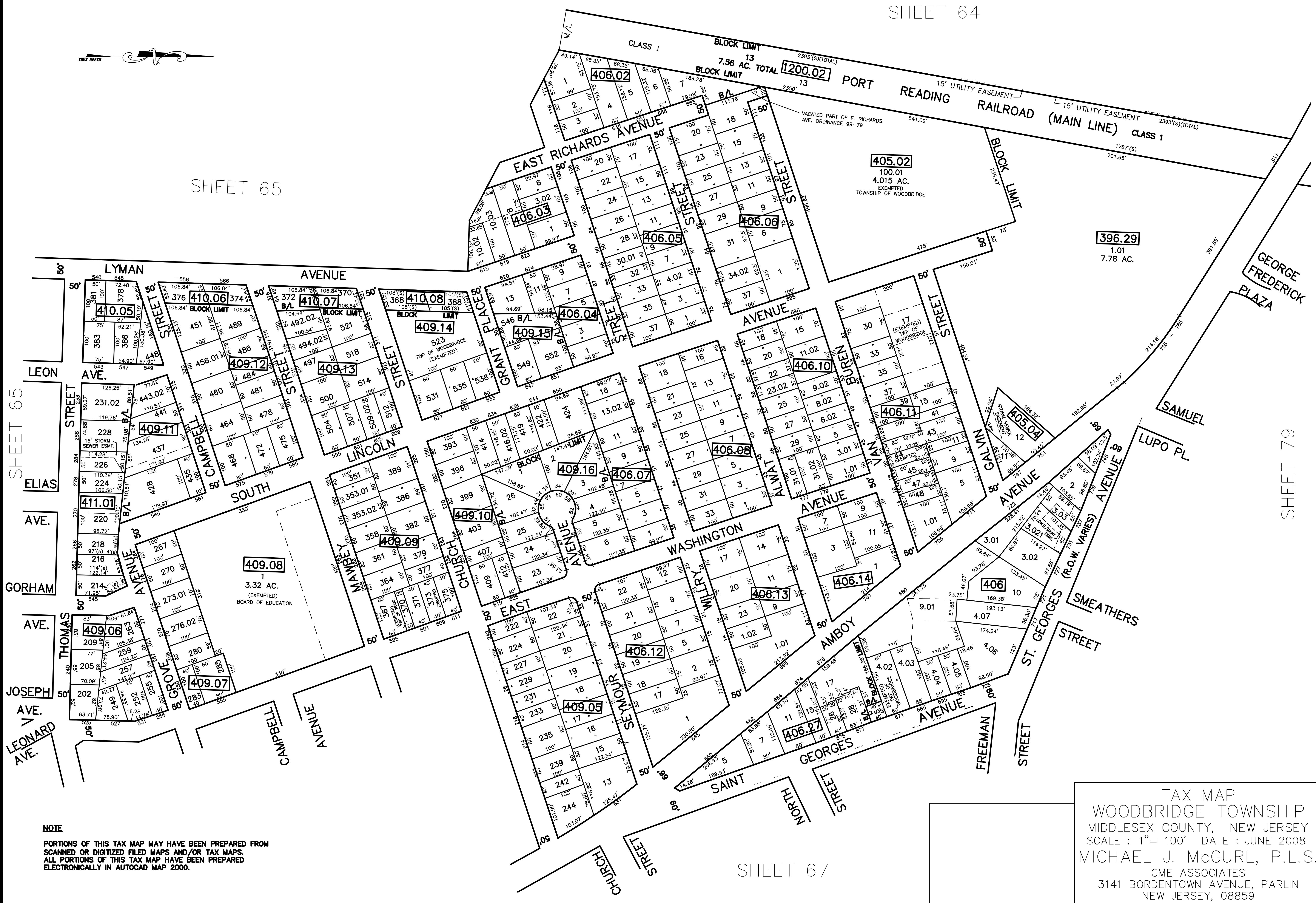


12/31/18	Top Map Revisions	SR
12/31/14	Top Map Revisions	SR
12/31/12	Top Map Revisions	SR
05/27/11	Block 406.13 Lots 1-8 Consolidated	SR
09/21/10	Subdivision-Bk. 411.01, lot 216 and 218	JSE
REVISED	DESCRIPTION	REV. BY
		CHK.



SHEET 65



NOTE
 PORTIONS OF THIS TAX MAP MAY HAVE BEEN PREPARED FROM
 SCANNED OR DIGITIZED FILED MAPS AND/OR TAX MAPS.
 ALL PORTIONS OF THIS TAX MAP HAVE BEEN PREPARED
 ELECTRONICALLY IN AUTOCAD MAP 2000.

TAX MAP
 WOODBRIDGE TOWNSHIP
 MIDDLESEX COUNTY, NEW JERSEY
 SCALE : 1"= 100' DATE : JUNE 2008
 MICHAEL J. McGURL, P.L.S.
 CME ASSOCIATES
 3141 BORDENTOWN AVENUE, PARLIN
 NEW JERSEY, 08859

SHEET 67

SHEET 79