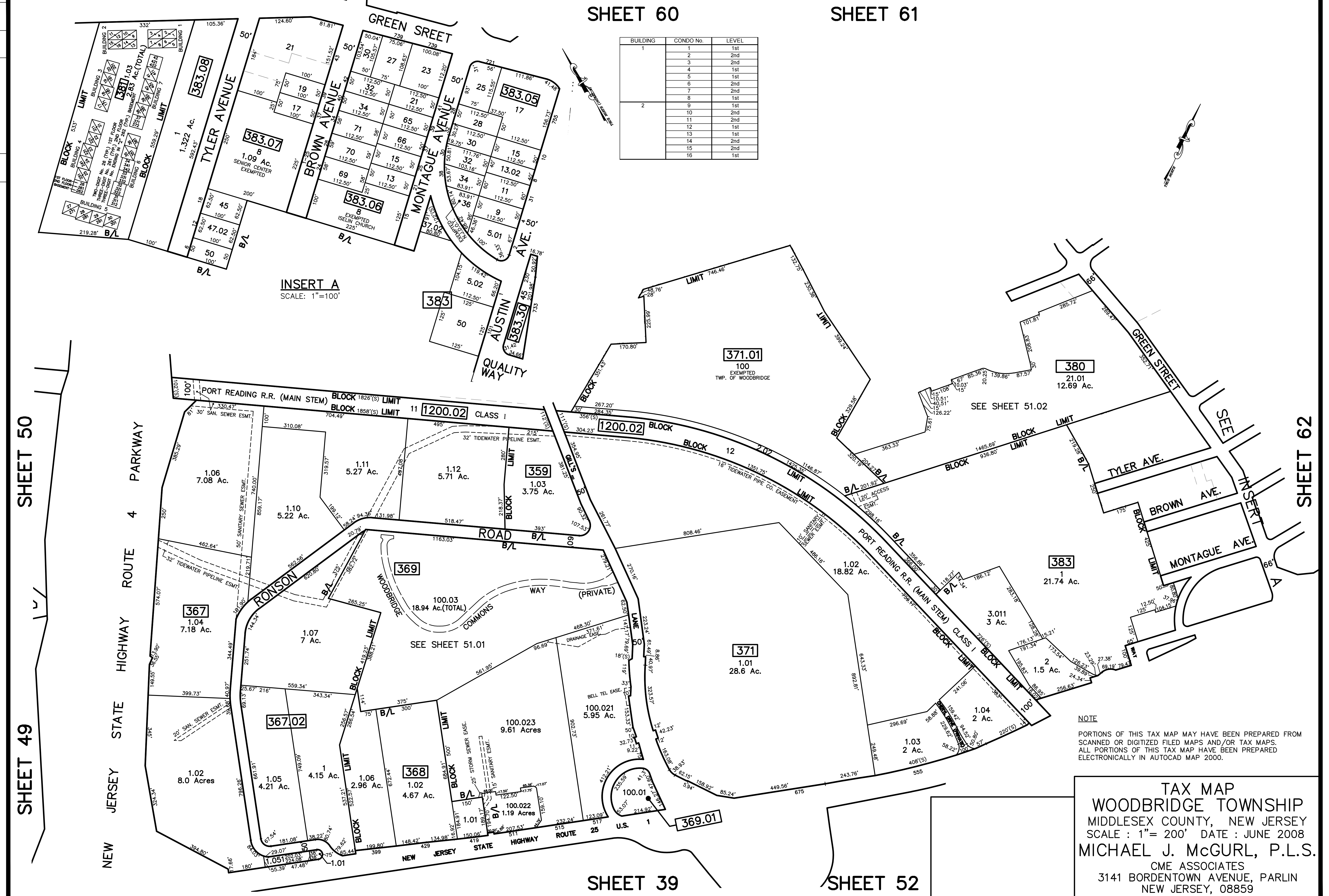
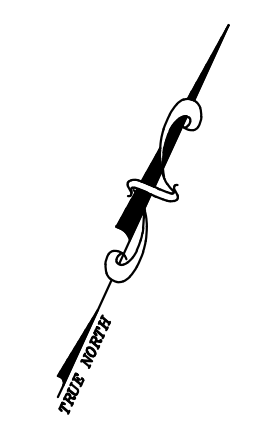


12/31/13	Tax Map Revisions	SB
12/31/12	Tax Map Revisions	SB
09/09/10	Subdivision-BK 369, lots 100.02, 100.021	JSE
REVISED	DESCRIPTION	REV. BY
		CHK.

SHEET 60

SHEET 61

BUILDING	CONDO No.	LEVEL
1	739	1st
	2	2nd
	3	2nd
	4	1st
	5	1st
	6	2nd
	7	2nd
	8	1st
2	9	1st
	10	2nd
	11	2nd
	12	1st
	13	1st
	14	2nd
	15	2nd
	16	1st



INSERT A
SCALE: 1"=100'

NOTE
PORTIONS OF THIS TAX MAP MAY HAVE BEEN PREPARED FROM
SCANNED OR DIGITIZED FILED MAPS AND/OR TAX MAPS.
ALL PORTIONS OF THIS TAX MAP HAVE BEEN PREPARED
ELECTRONICALLY IN AUTOCAD MAP 2000.

TAX MAP
WOODBIDGE TOWNSHIP
MIDDLESEX COUNTY, NEW JERSEY
SCALE : 1"= 200' DATE : JUNE 2008
MICHAEL J. McGURL, P.L.S.
CME ASSOCIATES
3141 BORDENTOWN AVENUE, PARLIN
NEW JERSEY, 08859

SHEET 50

SHEET 49

NEW JERSEY STATE HIGHWAY ROUTE 4 PARKWAY
NEW JERSEY STATE HIGHWAY ROUTE 25

SHEET 39

SHEET 52

SHEET 62