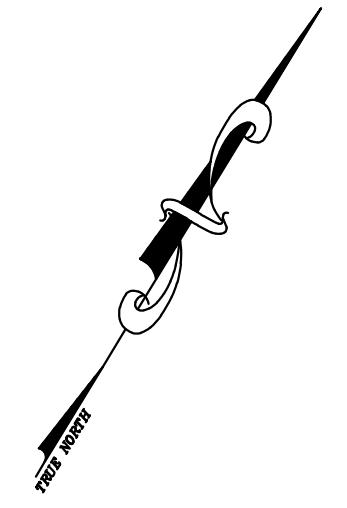


SHEET 83

12/31/12	Top Map Revisions	SB
06/17/11	Subdivision-BK 630, Lots 193 & 197	SB
06/16/11	Subdivision-BK 631, lot 176	SB
09/03/10	Subdivision-BK 631, lot 174	USE
REVISED	DESCRIPTION	REV. BY
		CHK.

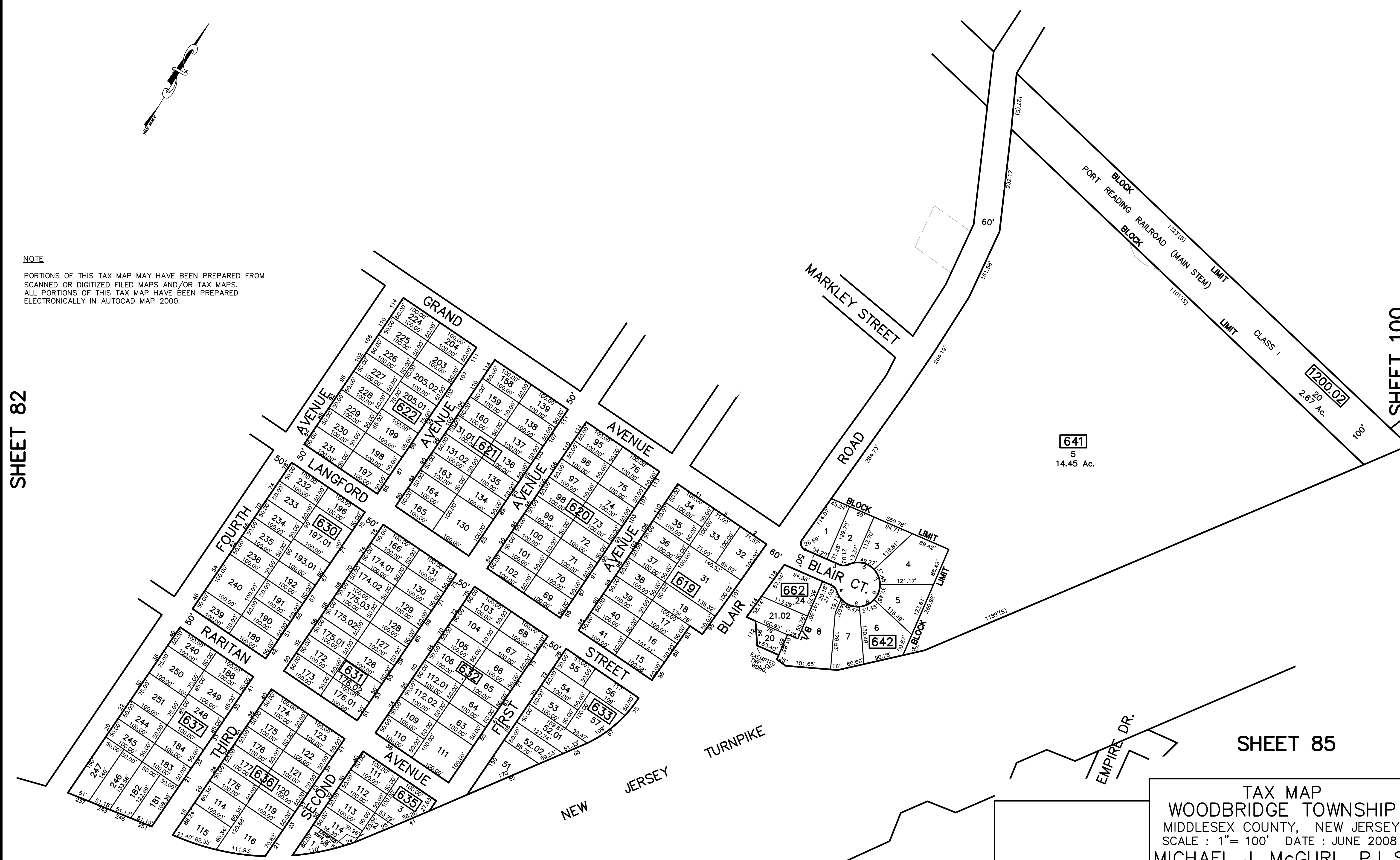


NOTE

PORTIONS OF THIS TAX MAP MAY HAVE BEEN PREPARED FROM SCANNED OR DIGITIZED FILED MAPS AND/OR TAX MAPS. ALL PORTIONS OF THIS TAX MAP HAVE BEEN PREPARED ELECTRONICALLY IN AUTOCAD MAP 2000.

SHEET 82

SHEET 100



641
5
14.45 Ac.

1200.02
2.67 Ac.

TAX MAP
WOODBRIDGE TOWNSHIP
MIDDLESEX COUNTY, NEW JERSEY
SCALE : 1"= 100' DATE : JUNE 2008
MICHAEL J. McGURL, P.L.S.
CME ASSOCIATES
3141 BORDENTOWN AVENUE, PARLIN
NEW JERSEY, 08859

SHEET 71

SHEET 85