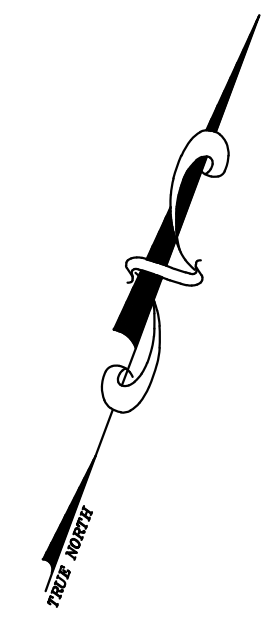
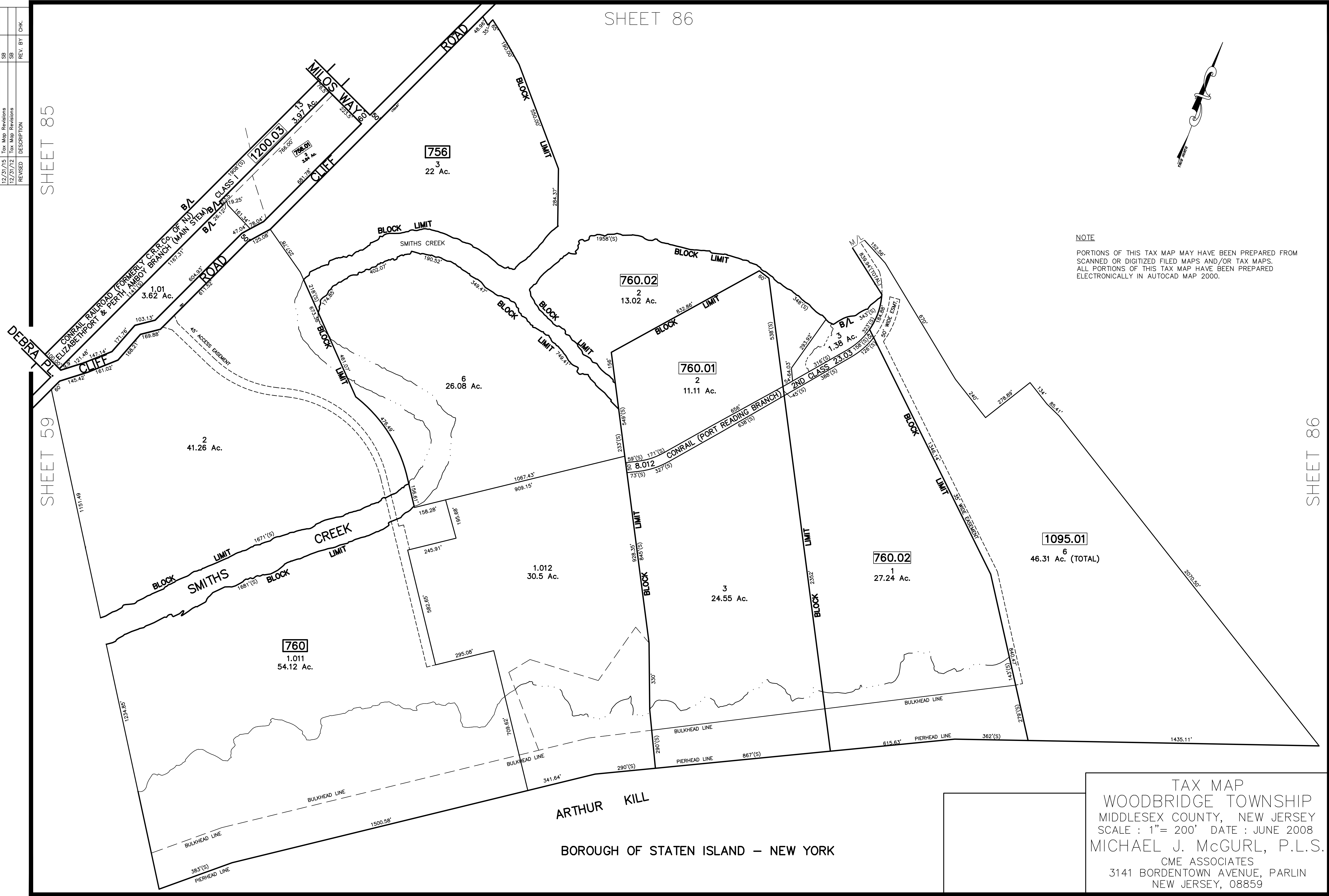


12/31/16	Tax Map Revisions	SR	REV. BY	CHK.
12/31/15	Tax Map Revisions	SR		
12/31/12	Tax Map Revisions	SR		
	DESCRIPTION			

SHEET 85

SHEET 59

SHEET 86



**NOTE**  
 PORTIONS OF THIS TAX MAP MAY HAVE BEEN PREPARED FROM  
 SCANNED OR DIGITIZED FILED MAPS AND/OR TAX MAPS.  
 ALL PORTIONS OF THIS TAX MAP HAVE BEEN PREPARED  
 ELECTRONICALLY IN AUTOCAD MAP 2000.

TAX MAP  
 WOODBRIDGE TOWNSHIP  
 MIDDLESEX COUNTY, NEW JERSEY  
 SCALE : 1" = 200' DATE : JUNE 2008  
 MICHAEL J. MCGURL, P.L.S.  
 CME ASSOCIATES  
 3141 BORDENTOWN AVENUE, PARLIN  
 NEW JERSEY, 08859

ARTHUR KILL  
 BOROUGH OF STATEN ISLAND - NEW YORK