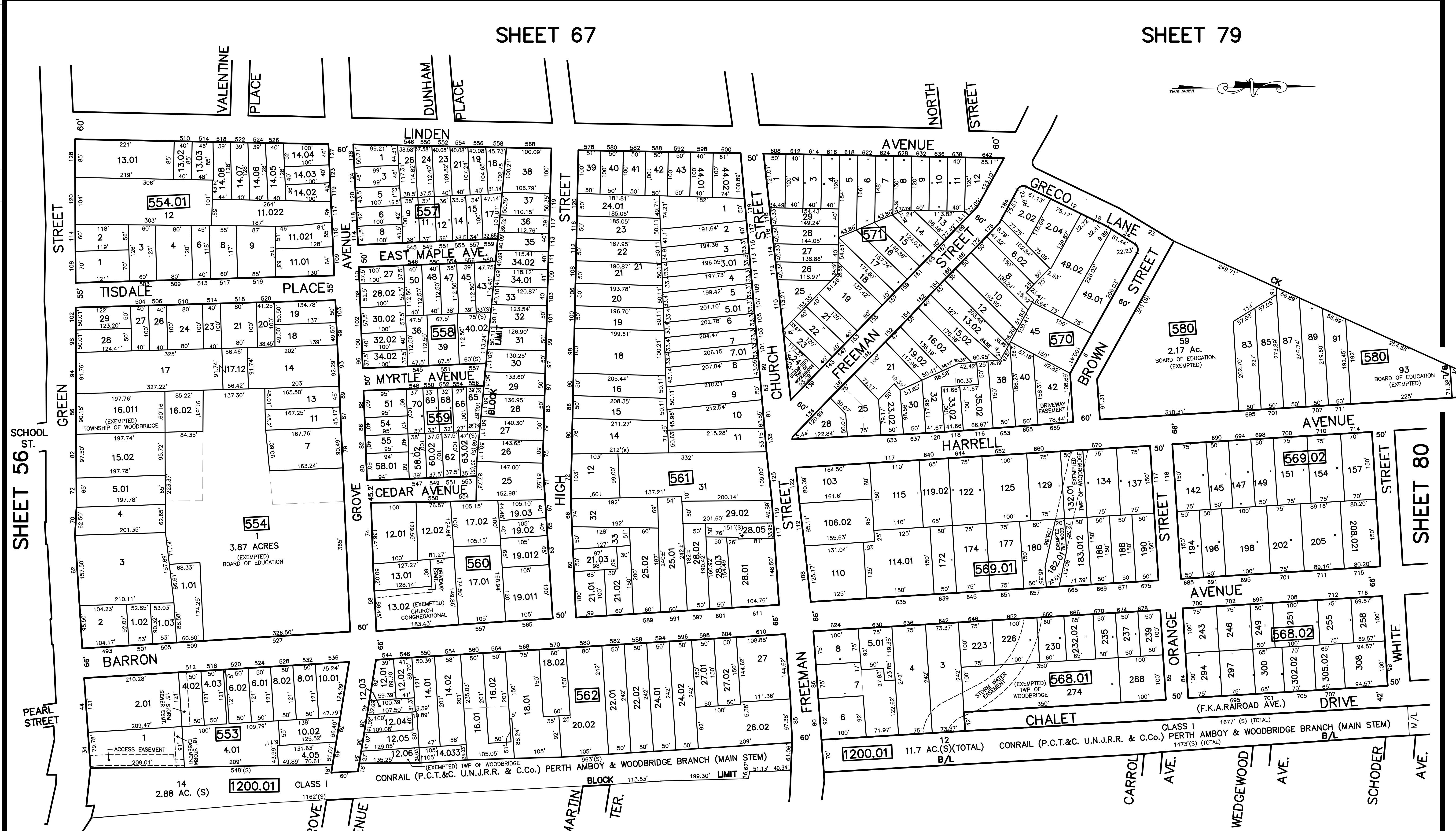


12/31/09	Top Map Revisions	SB
12/31/16	Top Map Revisions	SB
12/31/15	Top Map Revisions	SB
12/31/13	Top Map Revisions	SB
12/31/12	Top Map Revisions	SB
09/03/10	addition-BK 361, lot 24 and 42	JSB
REVISED	DESCRIPTION	
		REV. BY
		CHK.



SHEET 56 ST.  
SCHOOL

SHEET 80

**NOTE**  
 PORTIONS OF THIS TAX MAP MAY HAVE BEEN PREPARED FROM  
 SCANNED OR DIGITIZED FILED MAPS AND/OR TAX MAPS.  
 ALL PORTIONS OF THIS TAX MAP HAVE BEEN PREPARED  
 ELECTRONICALLY IN AUTOCAD MAP 2000.

**TAX MAP**  
**WOODBIDGE TOWNSHIP**  
 MIDDLESEX COUNTY, NEW JERSEY  
 SCALE : 1"= 100' DATE : JUNE 2008  
**MICHAEL J. MCGURL, P.L.S.**  
 CME ASSOCIATES  
 3141 BORDENTOWN AVENUE, PARLIN  
 NEW JERSEY, 08859