

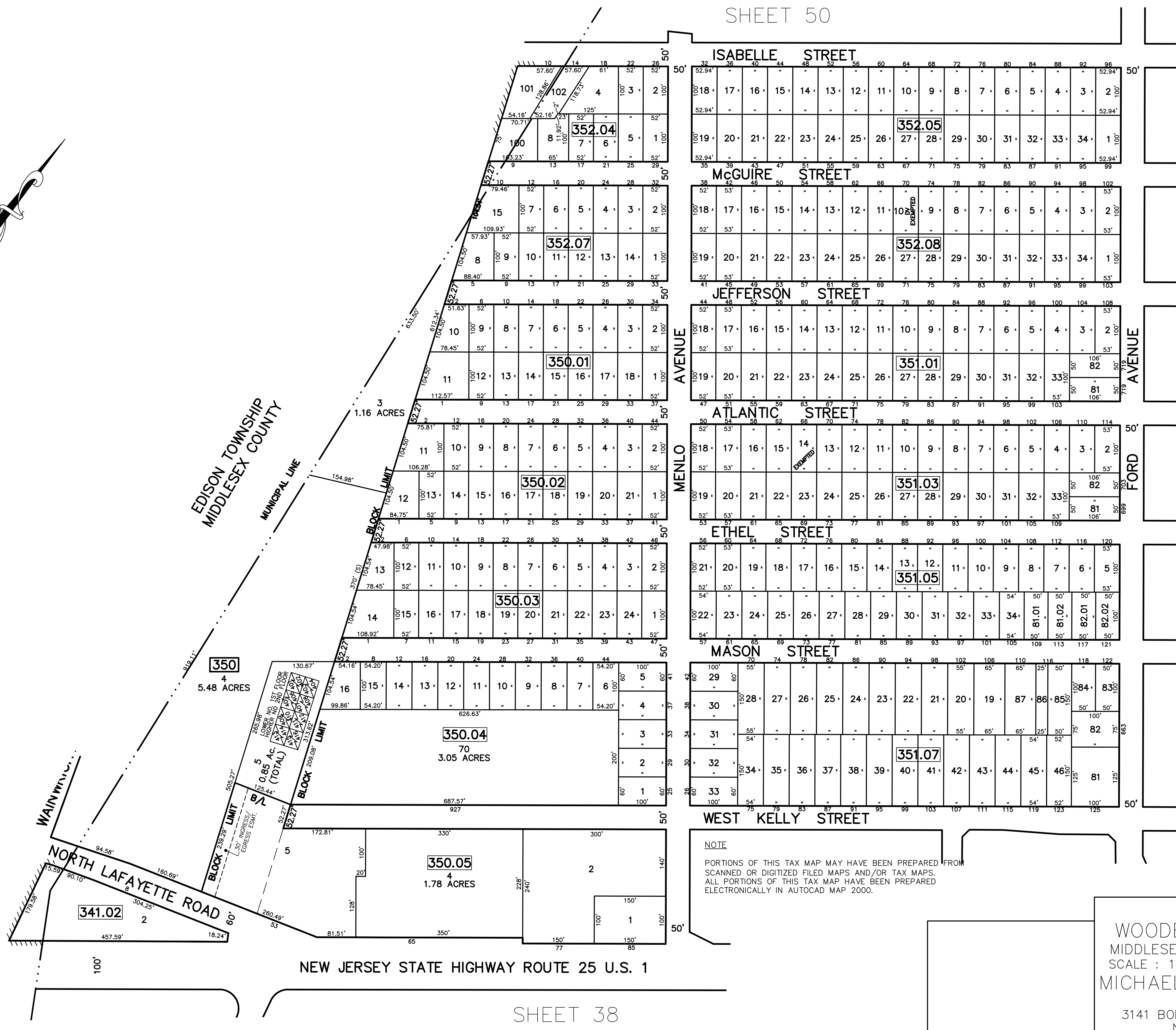
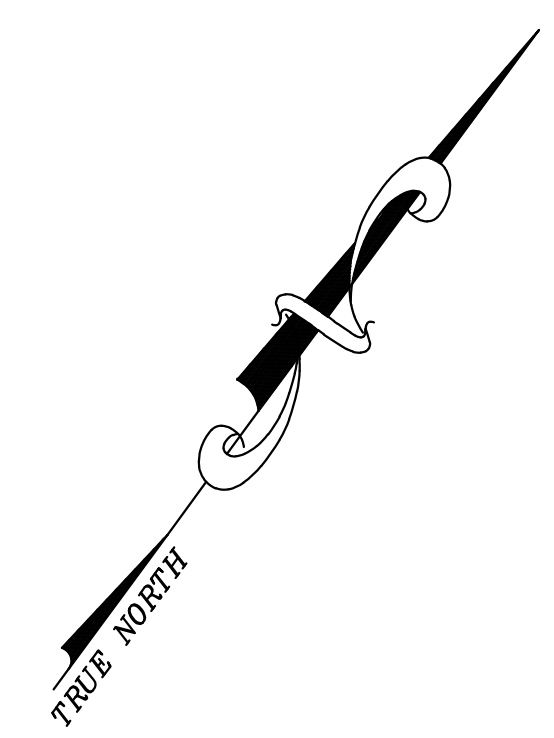
SHEET 50

SHEET 50

SHEET 49

SHEET 38

12/31/18	For Map Revisions	SR	CHK.
5/26/11	BL 350.05 Lots 2 & 3 Revised as per Deed	SR	
	REVISED	DESCRIPTION	
		REV. BY	



TAX MAP
 WOODBRIDGE TOWNSHIP
 MIDDLESEX COUNTY, NEW JERSEY
 SCALE : 1" = 100' DATE : JUNE 2008
 MICHAEL J. McGURL, P.L.S.
 CME ASSOCIATES
 3141 BORDENTOWN AVENUE, PARLIN
 NEW JERSEY, 08859