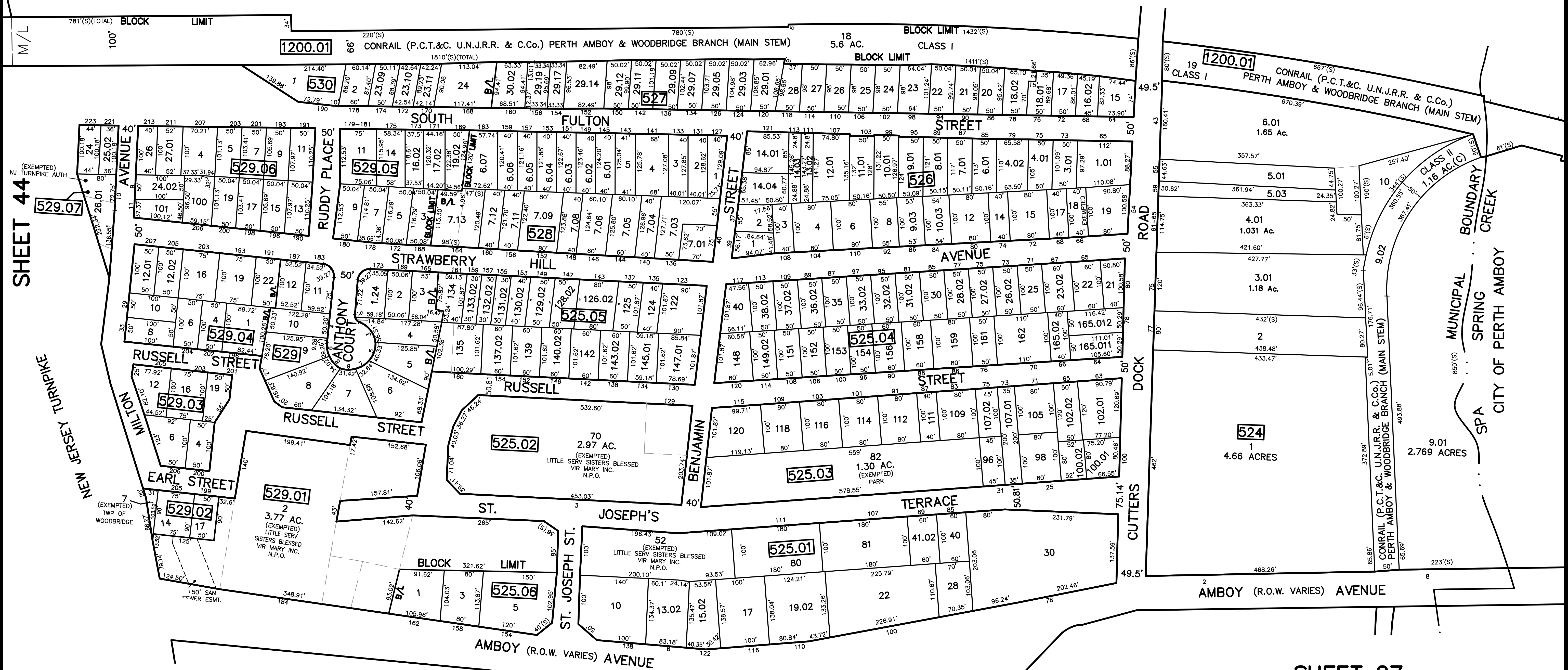
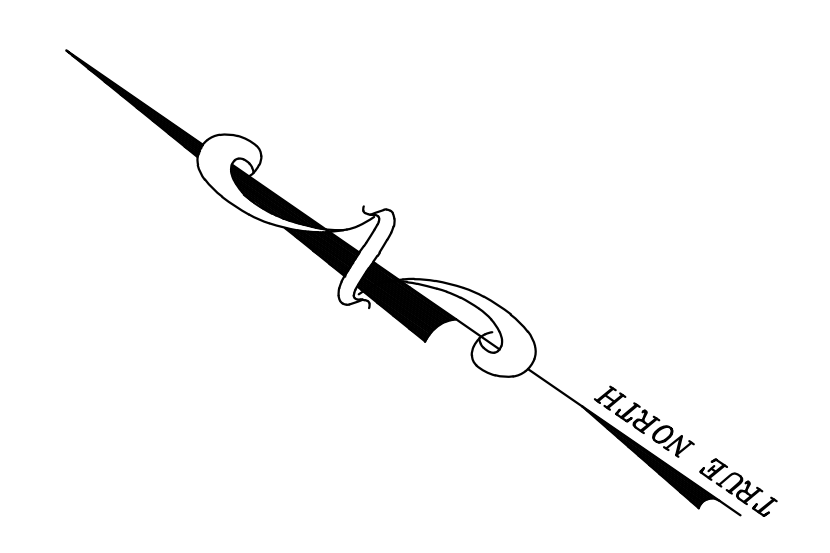


12/31/13	Trx Map Revisions	SB
12/31/12	Trx Map Revisions	SB
11/30/10	Subdivision-Bk 525.01, lot 40	JSE
09/10/10	Access Easement-Bk 524, lot 7.02	JSE
09/03/10	Subdivision-Bk 525.01, lots 19.02, 22, 28	JSE
	REVISED DESCRIPTION	REV. BY
		CHK.



SHEET 44

NEW JERSEY TURNPIKE

NOTE
 PORTIONS OF THIS TAX MAP MAY HAVE BEEN PREPARED FROM
 SCANNED OR DIGITIZED FILED MAPS AND/OR TAX MAPS.
 ALL PORTIONS OF THIS TAX MAP HAVE BEEN PREPARED
 ELECTRONICALLY IN AUTOCAD MAP 2000.

TAX MAP
WOODBIDGE TOWNSHIP
 MIDDLESEX COUNTY, NEW JERSEY
 SCALE : 1" = 100' DATE : JUNE 2008
MICHAEL J. McGURL, P.L.S.
 CME ASSOCIATES
 3141 BORDENTOWN AVENUE, PARLIN
 NEW JERSEY, 08859