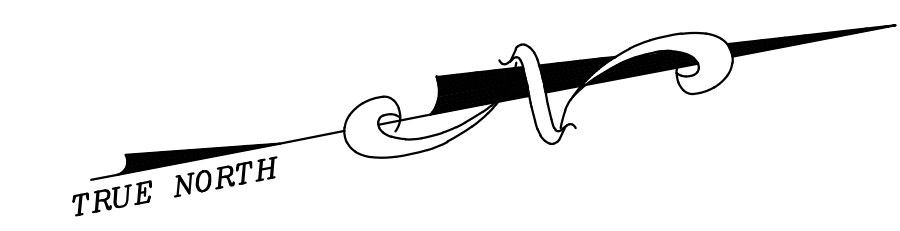


SHEET 18

SHEET 23

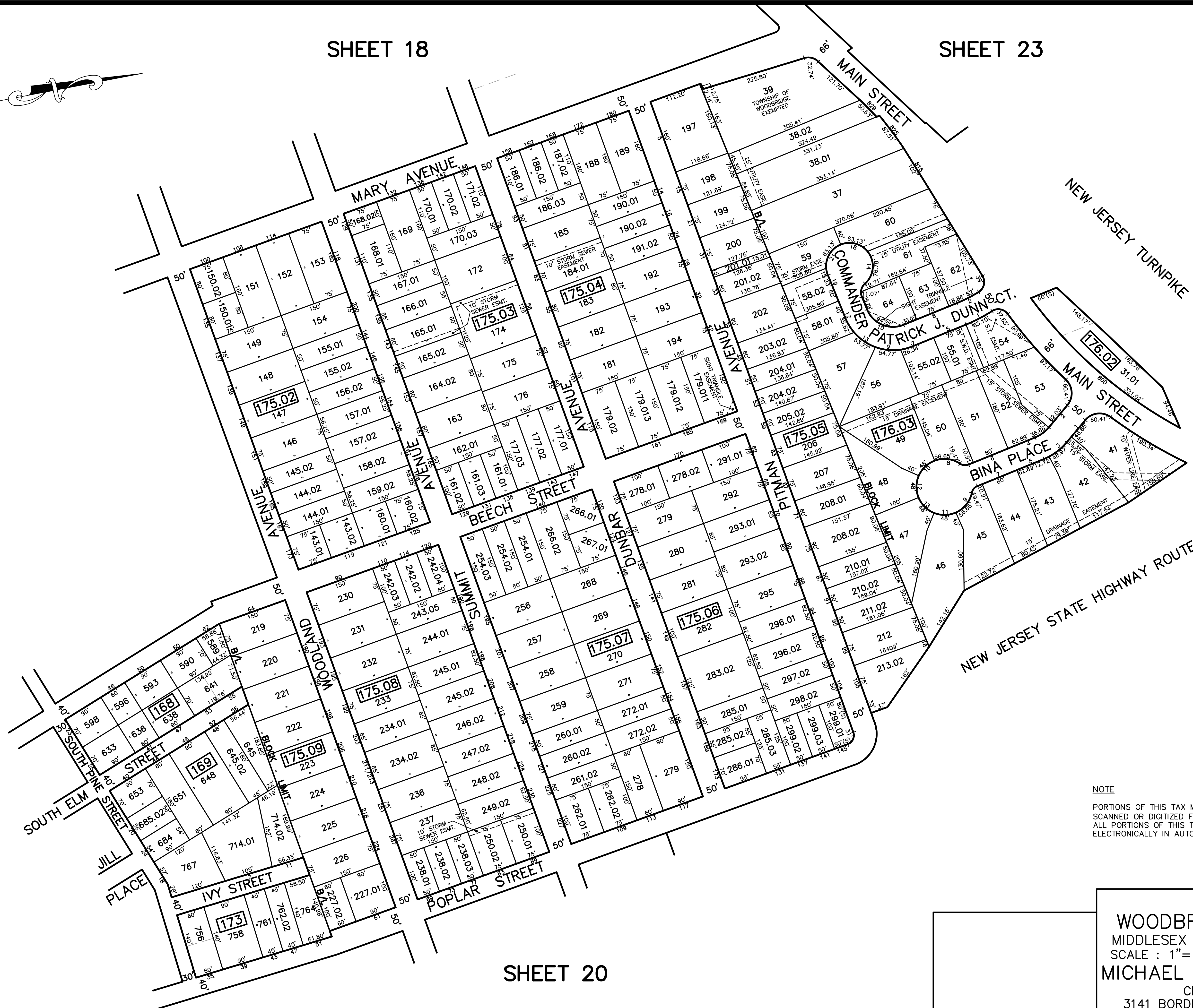


| | | |
|----------|-------------------|---------|
| 12/31/17 | Tax Map Revisions | SR |
| 12/31/16 | Tax Map Revisions | SR |
| 12/31/12 | Tax Map Revisions | SR |
| REVISED | DESCRIPTION | REV. BY |
| | | CHK. |

SHEET 14

SHEET 25

SHEET 21



SHEET 20

NOTE
 PORTIONS OF THIS TAX MAP MAY HAVE BEEN PREPARED FROM
 SCANNED OR DIGITIZED FILED MAPS AND/OR TAX MAPS.
 ALL PORTIONS OF THIS TAX MAP HAVE BEEN PREPARED
 ELECTRONICALLY IN AUTOCAD MAP 2000.

TAX MAP
 WOODBRIDGE TOWNSHIP
 MIDDLESEX COUNTY, NEW JERSEY
 SCALE : 1"= 100' DATE : JUNE 2008
 MICHAEL J. McGURL, P.L.S.
 CME ASSOCIATES
 3141 BORDENTOWN AVENUE, PARLIN
 NEW JERSEY, 08859