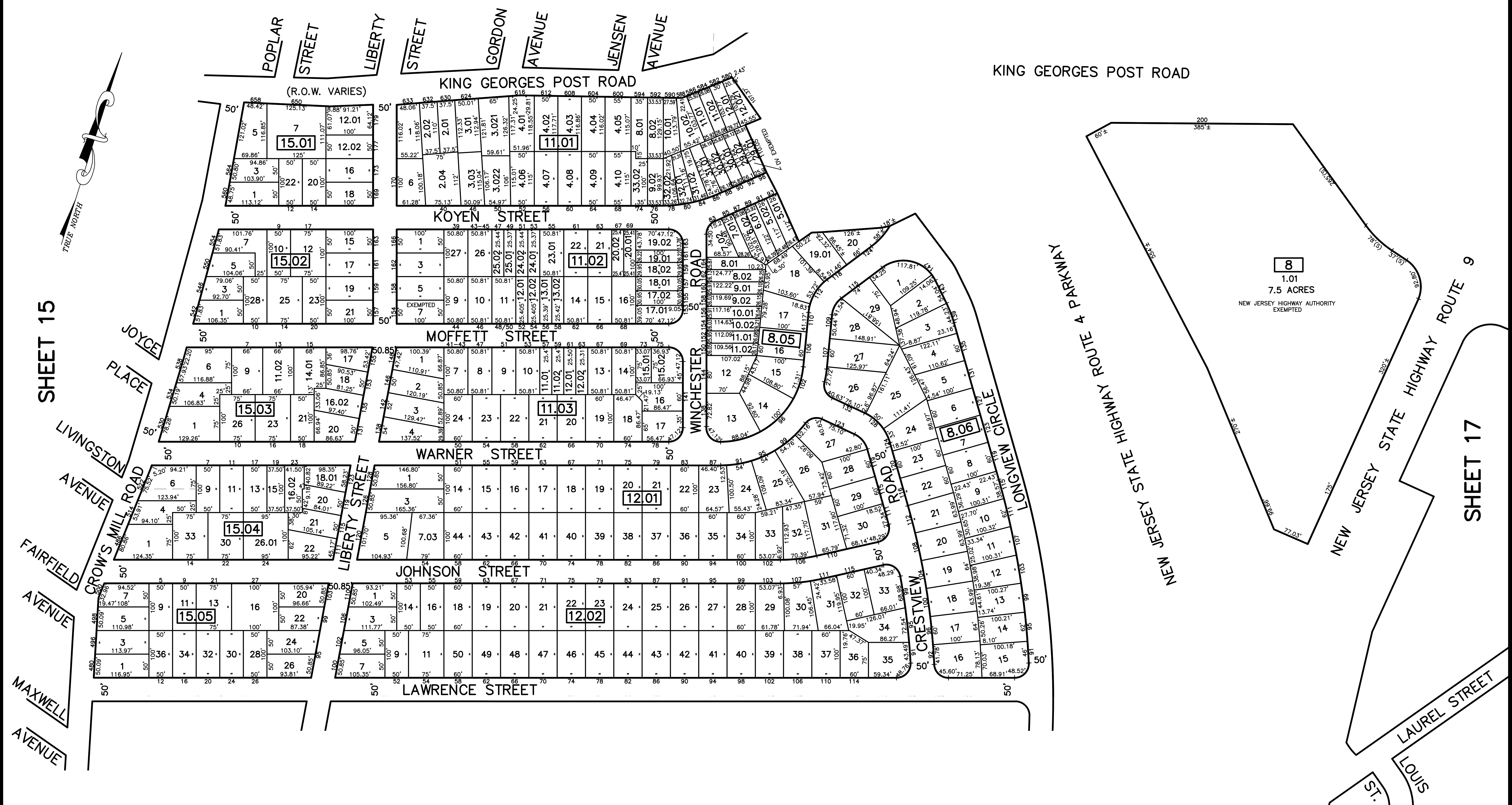
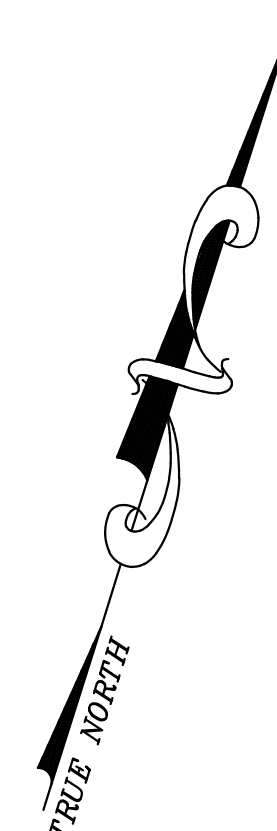


12/31/12	Tax Map Revisions	REVISION
		SR
		REV. BY
		CHK.

SHEET 20

SHEET 21



8
1.01
7.5 ACRES
NEW JERSEY HIGHWAY AUTHORITY
EXEMPTED

NOTE
PORTIONS OF THIS TAX MAP MAY HAVE BEEN PREPARED FROM
SCANNED OR DIGITIZED FILED MAPS AND/OR TAX MAPS.
ALL PORTIONS OF THIS TAX MAP HAVE BEEN PREPARED
ELECTRONICALLY IN AUTOCAD MAP 2000.

SHEET 9

TAX MAP
WOODBIDGE TOWNSHIP
MIDDLESEX COUNTY, NEW JERSEY
SCALE : 1"= 100' DATE : JUNE 2008
MICHAEL J. McGURL, P.L.S.
CME ASSOCIATES
3141 BORDENTOWN AVENUE, PARLIN
NEW JERSEY, 08859