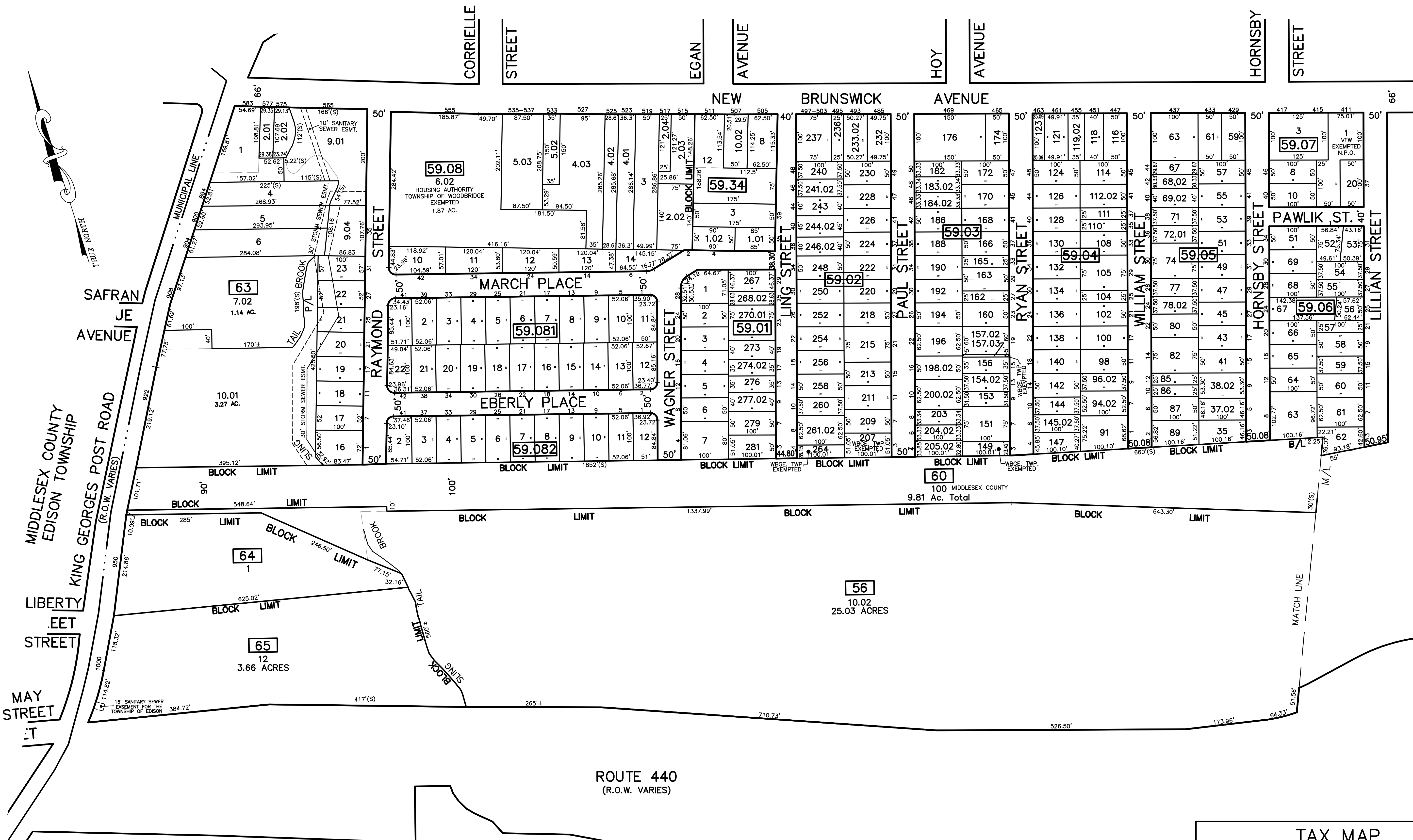


SHEET 15

| | | |
|----------|--------------------------------|---------|
| 12/31/17 | Top Map Revisions | SR |
| 12/31/12 | Top Map Revisions | SR |
| 09/02/10 | Corrections - Blk 63, lot 9,04 | JSE |
| REVISED | DESCRIPTION | REV. BY |
| | | CHK. |



SHEET 10

NOTE
 PORTIONS OF THIS TAX MAP MAY HAVE BEEN PREPARED FROM
 SCANNED OR DIGITIZED FILED MAPS AND/OR TAX MAPS.
 ALL PORTIONS OF THIS TAX MAP HAVE BEEN PREPARED
 ELECTRONICALLY IN AUTOCAD MAP 2000.

SHEET 7

TAX MAP
 WOODBRIDGE TOWNSHIP
 MIDDLESEX COUNTY, NEW JERSEY
 SCALE : 1" = 100' DATE : JUNE 2008
 MICHAEL J. McGURL, P.L.S.
 CME ASSOCIATES
 3141 BORDENTOWN AVENUE, PARLIN
 NEW JERSEY, 08859