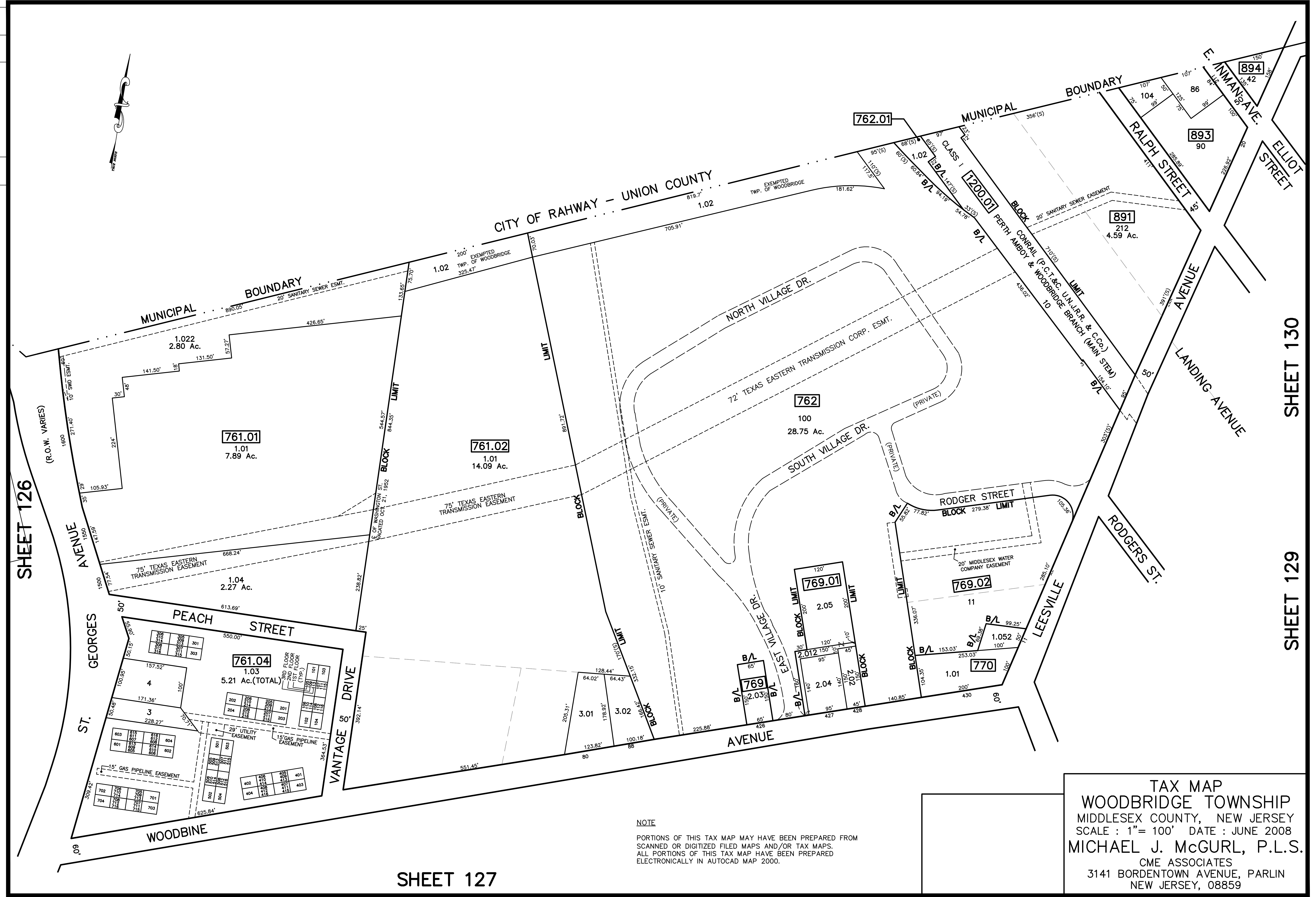


12/31/14	Tox Map Revisions	SR	REV. BY	CHK.
12/31/13	Tox Map Revisions	SR		
11/02/11	B/L 761.01, L1.01 & L1.02-Combine to create Lot 1.03 and add 15' Easement	SR		
REVISED	DESCRIPTION			



SHEET 126

SHEET 130

SHEET 129

SHEET 127

NOTE
 PORTIONS OF THIS TAX MAP MAY HAVE BEEN PREPARED FROM
 SCANNED OR DIGITIZED FILED MAPS AND/OR TAX MAPS.
 ALL PORTIONS OF THIS TAX MAP HAVE BEEN PREPARED
 ELECTRONICALLY IN AUTOCAD MAP 2000.

TAX MAP
 WOODBRIDGE TOWNSHIP
 MIDDLESEX COUNTY, NEW JERSEY
 SCALE : 1" = 100' DATE : JUNE 2008
 MICHAEL J. McGURL, P.L.S.
 CME ASSOCIATES
 3141 BORDENTOWN AVENUE, PARLIN
 NEW JERSEY, 08859