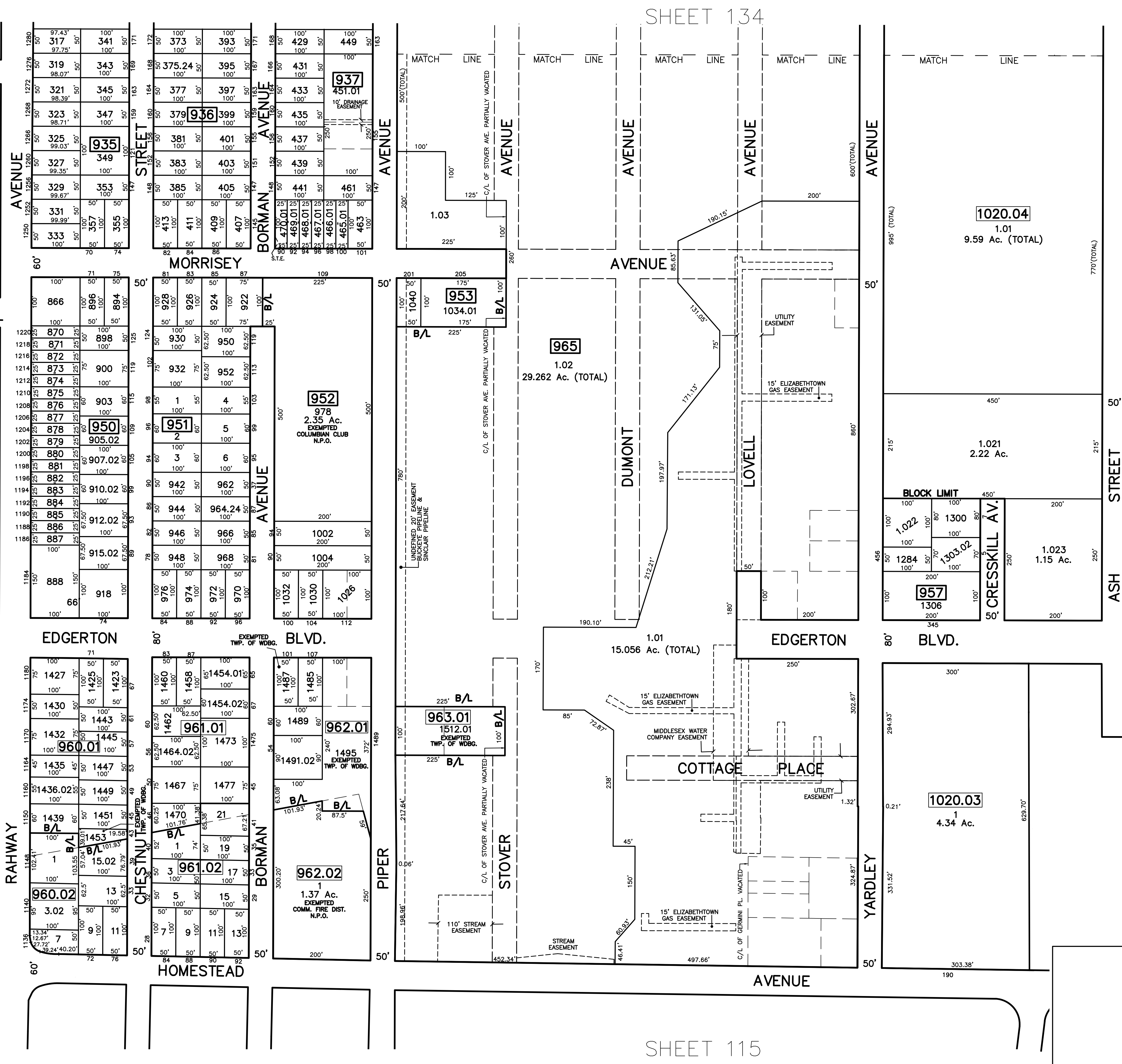


|          |   |      |
|----------|---|------|
| 12/31/18 | Tax Map Revisions                         | SB   |
| 12/31/16 | Tax Map Revisions                         | SB   |
| 12/31/13 | Tax Map Revisions                         | SB   |
| 12/31/12 | Tax Map Revisions                         | SB   |
| 09/03/10 | Subdivision-BK 837, lots 451, 457 and 459 | ISE  |
|          | REVISED                                   |      |
|          | DESCRIPTION                               |      |
|          | REV. BY                                   | CHK. |

PARIS  
LA.  
KOHL  
ST.  
RAHWAY  
SHEET 113  
SHEET 114  
SHEET 115



NOTE  
PORTIONS OF THIS TAX MAP MAY HAVE BEEN PREPARED FROM  
SCANNED OR DIGITIZED FILED MAPS AND/OR TAX MAPS.  
ALL PORTIONS OF THIS TAX MAP HAVE BEEN PREPARED  
ELECTRONICALLY IN AUTOCAD MAP 2000.

TAX MAP  
WOODBIDGE TOWNSHIP  
MIDDLESEX COUNTY, NEW JERSEY  
SCALE : 1"= 100' DATE : JUNE 2008  
MICHAEL J. McGURL, P.L.S.  
CME ASSOCIATES  
3141 BORDENTOWN AVENUE, PARLIN  
NEW JERSEY, 08859

SHEET 118

SHEET 117

SHEET 115

SHEET 134